

KIPPHEBELSCHALTER TOGGLE SWITCHES

entsprechend VG und IEC
in accordance with VG and IEC



Baureihe
Series

09



Die Kipphebelschalter von KISSLING wurden nach strengen Richtlinien entwickelt.

Sie bieten dem Anwender eine Vielzahl von Optionen. Praktisch kann fast jede Bedienungsart, Anschlussart, Dichtigkeit sowie Belastbarkeit erfüllt werden.

Typische Anwendungen:

- Anlagen- und Apparatebau
- Medizintechnik
- Nutzfahrzeuge
- Industrielle Ausrüstung
- Kommerzielle und militärische Luftfahrt
- Militärische Ausrüstung

The toggle switches available from KISSLING have been developed under strict guidelines to meet recognised international standards.

A multiplicity of options may be selected including: switching configuration, termination type, load carrying capabilities and locking combinations.

Typical applications:

- *Plant and Industrial Engineering*
- *Medical Equipment*
- *Commercial Motor Vehicles*
- *Industrial Equipment*
- *Commercial and Military Aerospace*
- *Military Equipment*

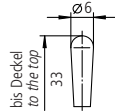
Abmessungen | Dimensions

Hebelform: Standard

Standardfarbe schwarz
lieferbar auch in rot und silber

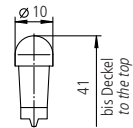
Lever type: Standard

Standard colour: black
available in red or silver

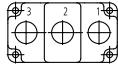


Hebelform: Verriegelung

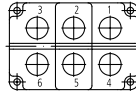
Lever type: Lock



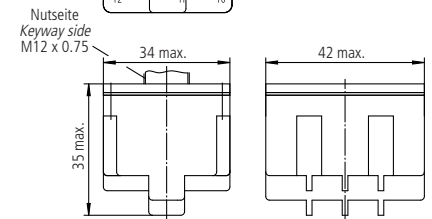
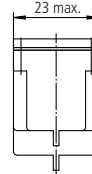
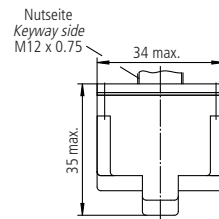
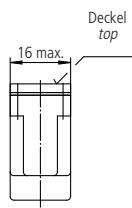
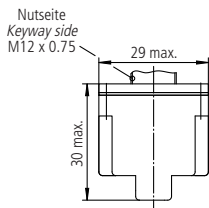
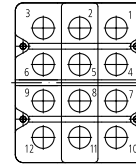
1 polig pole



2 polig pole



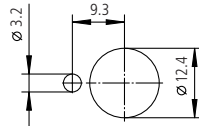
4 polig pole



Montagebohrung:

mit Nasenscheibe

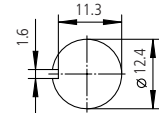
Mounting Detail:
with Locking Ring



Montagebohrung:

ohne Nasenscheibe

Mounting Detail:
without Locking Ring



Anschluss | Connector

Schraubanschluss M 3,5 x 6 - ISO 1580

Screws M 3,5 x 6 - ISO 1580

Flachstecker DIN 46 244 - A 6,3 - 0,8

für Stechkülsen nach DIN und
KISSLING-Steckhülsegehäuse

Faston DIN 46 244 - A 6,3 - 0,8

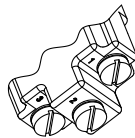
for receptacles iaw DIN and
KISSLING-receptacles

Lötanschluss bis 2 qmm

Soldering terminal to AWG 14

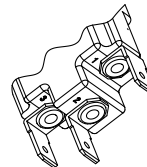
Anschluss
Connection

1



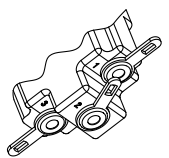
Anschluss
Connection

2



Anschluss
Connection

3



Zubehör | Accessories

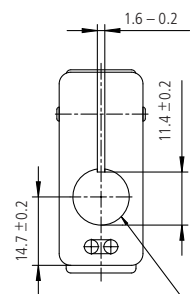
Sicherheitsklappe:

Verhindert das ungewollte Betätigen des Kippschalters. Sie ist in den Farben SIGNALORANGE, SIGNALROT, SCHWARZ, GELB und OLIV lieferbar. Andere Farben sowie Schrift- oder Symbolprägungen sind auf Wunsch möglich.

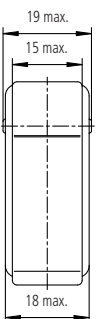
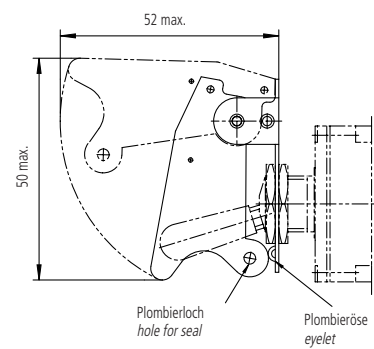
Switch Guard:

Prevents accidental switching of toggle. Available in SIGNALORANGE, SIGNALRED, BLACK, YELLOW and OLIV.

Special Symbols and other colors available.



für Gewinde M12
thread size M12

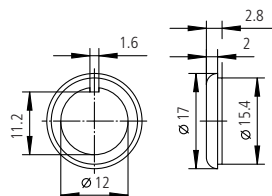


Dichtscheibe: 08.0.0.50

Zur Abdichtung der Montagebohrung

Seal Ring:

For sealing of mounting position

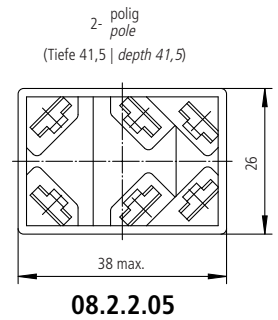
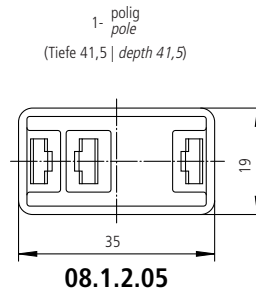


Steckhülsegehäuse:

Zum schnellen Anschluss des Kipphebelschalters, zur Erhöhung der Sicherheit und zum Schutz gegen Berühren (IP 20) der Flachstecker. Verpolschutz des Kippsschalters. Verwendbar für Kippsschalter mit Anschluss 2.

Receptacle:

For quick connection, increases safety. Available for switches with connection 2.



Kodierwiderstand:

Zur Sicherheitsschaltung bei GGVS-Ausführung

Hebelauswahl:

Standard - schwarz, weitere Farben auf Anfrage

Kipphebelschalter mit Kunststoffhebel,

Schutzart bis IP6K5 und Temperaturen von -35°C bis +60°C
siehe Kipphebelschalter Baureihe 07 ...

Kipphebelschalter mit Kunststoffhebel,

Schutzart bis IP6K7 und Temperaturen von -55°C bis +85°C
siehe Kipphebelschalter Baureihe 08 ...

Resistor:

For safety circuit at ADR-equipment

Range of Toggles:

Standard colour - black, alternative colours on request

Toggle Switches with plastic Toggle,

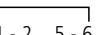
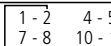
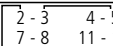
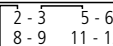
Protection to IP6K5 and a temperature range of -35°C to +60°C
please note Toggle Switches Series 07 ...

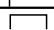
Toggle Switches with plastic Toggle,


Protection to IP6K7 and a temperature range of -55°C to +85°C
please note Toggle Switches Series 08 ...

Schaltarten, Kontaktierung

Switching styles, Connection

Schaltart Switching styles	1-polig 1-pole Hebelstellung auf Toggle position in			2-polig 2-pole Hebelstellung auf Toggle position in			4-polig 4-pole Hebelstellung auf Toggle position in		
	Nutseite keyway side	Mitte center	Nutgegenseite opposite keyway side	Nutseite keyway side	Mitte center	Nutgegenseite opposite keyway side	Nutseite keyway side	Mitte center	Nutgegenseite opposite keyway side
10	0	-	2-3	0 0	-	2-3 5-6	0 0 0 0	-	2-3 5-6 8-9 11-12
11	0 *	-	2-3	0 * 0	-	2-3 5-6	0 * 0 0 * 0	-	2-3 5-6 8-9 11-12
12	1-2 *	-	0	1-2 * 4-5	-	0 0	1-2 4-5 7-8 * 10-11	-	0 0 0 0
13	1-2	-	2-3	1-2 4-5	-	2-3 5-6	1-2 4-5 7-8 10-11	-	2-3 5-6 8-9 11-12
14	1-2 *	-	2-3	1-2 * 4-5	-	2-3 5-6	1-2 * 4-5 7-8 * 10-11	-	2-3 5-6 8-9 11-12
15	1-2	0	2-3	1-2 4-5	0 0	2-3 5-6	1-2 4-5 7-8 10-11	0 0 0 0	2-3 5-6 8-9 11-12
16	1-2 *	0	2-3	1-2 * 4-5	0 0	2-3 5-6	1-2 * 4-5 7-8 * 10-11	0 0 0 0	2-3 5-6 8-9 11-12
17	1-2 *	0	2-3 *	1-2 * 4-5	0 0	2-3 * 5-6	1-2 * 4-5 7-8 * 10-11	0 0 0 0	2-3 * 5-6 8-9 11-12
18	1-2	1-2	2-3	1-2 4-5	1-2 4-5	2-3 5-6	1-2 4-5 7-8 10-11	1-2 4-5 7-8 10-11	2-3 5-6 8-9 11-12
19	1-2	1-2	2-3 *	1-2 4-5	1-2 4-5	2-3 * 5-6	1-2 4-5 7-8 10-11	1-2 4-5 7-8 10-11	2-3 * 5-6 8-9 11-12
20				1-2 4-5	1-2 5-6	2-3 5-6	1-2 4-5 7-8 10-11	2-3 4-5 0 0	2-3 5-6 8-9 11-12
21				1-2 4-5	 1-2 5-6	2-3 5-6			
22				1-2 * 4-5	1-2 5-6	2-3 * 5-6	1-2 * 4-5 7-8 * 10-11	2-3 4-5 0 0	2-3 * 5-6 8-9 11-12
23	1-2	2-3	2-3	1-2 4-5	2-3 4-5	2-3 5-6	1-2 4-5 7-8 10-11	2-3 4-5 7-8 11-12	2-3 5-6 8-9 11-12
24				1-2 4-5	1-2 5-6	2-3 * 5-6			
25				1-2 * 4-5	1-2 5-6	2-3 5-6	1-2 * 4-5 7-8 * 10-11	2-3 4-5 7-8 11-12	2-3 5-6 8-9 11-12
26							 1-2 4-5 7-8 10-11	 2-3 4-5 7-8 11-12	 2-3 5-6 8-9 11-12
27							1-2 * 4-5 7-8 * 10-11	2-3 4-5 7-8 11-12	2-3 * 5-6 8-9 * 11-12

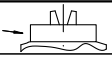

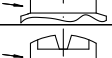

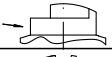

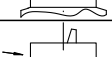


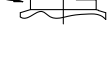


 Brücke

 Bridge

* Diese Position ist tastend, nach dem Loslassen schaltet der Kippsschalter in die Ausgangsposition zurück.

* These positions are only momentary. All others are maintained.

Verriegelungs-Optionen | Locking options

Verriegelungs- ausführung <i>Available locking combinations</i>	Hebelstellung auf <i>Toggle position in</i>			empfohlen für Schaltart <i>recommended for switching style</i>
	Nutseite <i>keyway side</i>	Mitte <i>center</i>	Nutgegenseite <i>opposite keyway side</i>	
A Nutseite <i>keyway side</i> 	verriegelt <i>locked</i>	verriegelt <i>locked</i>	verriegelt <i>locked</i>	15, 18, 20, 21, 23, 26
B Nutseite <i>keyway side</i> 	verriegelt <i>locked</i>	verriegelt <i>locked</i>	entriegelt <i>locked out</i>	15, 18, 19, 20, 21, 23, 24, 26
D Nutseite <i>keyway side</i> 	verriegelt <i>locked</i>	entriegelt <i>locked out</i>	verriegelt <i>locked</i>	10, 13
E Nutseite <i>keyway side</i> 	entriegelt <i>locked out</i>	verriegelt <i>locked</i>	entriegelt <i>locked out</i>	15, 16, 17, 18, 19, 20, 21, 22, 23, 24, 25, 26, 27
F Nutseite <i>keyway side</i> 	entriegelt <i>locked out</i>	entriegelt <i>locked out</i>	verriegelt <i>locked</i>	10, 11, 12, 13, 14
G Nutseite <i>keyway side</i> 	verriegelt <i>locked</i>	entriegelt <i>locked out</i>	entriegelt <i>locked out</i>	10, 13
K Nutseite <i>keyway side</i> 	entriegelt <i>locked out</i>	verriegelt <i>locked</i>	verriegelt <i>locked</i>	15, 16, 18, 20, 21, 23, 25, 26
L Nutseite <i>keyway side</i> 	entriegelt <i>locked out</i>	verriegelt zu Nutseite <i>locked to keyway side</i>	entriegelt <i>locked out</i>	15, 16, 17, 18, 19, 20, 21, 22, 23, 24, 25, 26, 27
M Nutseite <i>keyway side</i> 	entriegelt <i>locked out</i>	verriegelt zu Nutgegenseite <i>locked to opposite keyway side</i>	verriegelt <i>locked</i>	15, 16, 18, 20, 21, 23, 25, 26
N Nutseite <i>keyway side</i> 	entriegelt <i>locked out</i>	verriegelt zu Nutgegenseite <i>locked to opposite keyway side</i>	entriegelt <i>locked out</i>	15, 16, 17, 18, 19, 20, 21, 22, 23, 24, 25, 26, 27
P Nutseite <i>keyway side</i> 	verriegelt <i>locked</i>	verriegelt zu Nutseite <i>locked to keyway side</i>	entriegelt <i>locked out</i>	15, 18, 19, 20, 21, 23, 24, 26
T Nutseite <i>keyway side</i> 	verriegelt <i>locked</i>	verriegelt von Mitte zu Nutseite <i>locked from middle to keyway side</i>	verriegelt von Nutgegenseite zu Mitte <i>locked from opposite keyway side to middle</i>	15, 18, 20, 23, 26

Bestellschlüssel | Ordering Key

09 . 1 . 2 . 13 A

1 2 3 4 5

1	Baureihe	Series
2	Polzahl	No. Poles
3	Anschluss	Connection
4	Schaltart	Switching styles
5	Verriegelungsausführung	Available locking combinations

Beispiel | *Example*
09.1.2.13A

Technische Daten | Technical Data

Aufbau <i>Construction</i>	
Gehäusewerkstoff	Duroplast GF <i>Housing material</i>
Beständig gegen gebräuchliche Öle, Kraftstoffe, Hydraulikflüssigkeiten, Alkohol und Feuerlöschmittel	<i>Resistant against most oils, fuels, hydraulic fluids, alcohol and fire extinguishing liquid</i>
Baugröße entspricht	VG 95 318 (jedoch Metallhebel <i>but with metal toggle</i>) und <i>and</i> IEC 1 020 <i>Construction iaw</i>
Schutzart Innenraum	IP68 IEC 60529 / IP6K7 DIN 40050 Blatt 9 <i>Part 9</i> <i>Seal</i>
Schutzart Anschlüsse	IP00 IEC 60529 <i>Connections</i>
Mechanische Daten <i>Mechanical Data</i>	
Stromführende Teile	CuZn-Legierung <i>CuZn-alloy</i> <i>Current carrying parts</i>
Kontaktwerkstoff	Ag-Legierung <i>Ag-alloy</i> <i>Contact material</i>
Umgebungstemperatur	-55°C bis +85°C <i>-67°F to +185°F</i> <i>Ambient temperature</i>
elektr. Lebensdauer (bei Nennlast) nach VG 95 210 Blatt 21, Schärfegrad H	100.000 Schaltspiele <i>cycles</i> <i>Electrical life (nominal load) iaw VG 95 210 Part 21, grade H</i>
Elektrische Daten <i>Electrical Data</i>	
Nennspannung/Dauerstrom	28 VDC, 20 A ohmsche Last <i>ohmic load</i> <i>Nominal voltage/Continuous current</i> 28 VDC, 15 A L/R = 5 ms induktive Last <i>inductive load</i> 115 VAC, 15 A induktive Last <i>inductive load</i>
Schaltleistung min.	12 VDC, 20 mA <i>Min. switching capacity</i>
Für kleinere Spannungen bzw. Ströme empfehlen wir Schalter mit vergoldeten Kontakten. <i>It is recommended to use gold-plated contacts for lower currents or voltages.</i>	



Kissling Elektrotechnik GmbH
 Bohnland 16
 D-72218 Wildberg
 Telefon: +49 (0) 70 54 / 2 06-0
 Telefax: +49 (0) 70 54 / 2 06-3 02
 E-mail: info@kissling.de
 Internet: www.kissling.de